

PLEASE READ THE INSTRUCTIONS CAREFULLY BEFORE FITTING THIS KIT**If you have a problem, however small, call our Technical Department.**

Tel:- 01925 636950. Fax:- 01925 243111. Mon - Thurs 8.30 - 5pm.

- 1 Remove the standard air filter box assembly. Leave in place the engine intake hose.
- 2 **Drawing A.** Drill an 8mm hole in the wheelarch. Fit the rubber bobbin using the two spring washers and nuts.
- 3 Attach the bracket to the metal tube using the stud, nut and spring washer. **Drawing B.**
- 4 Feed the metal tube into the intake hose and attach the bracket to the rubber bobbin. Tighten hose clip on intake hose and tighten nuts on the rubber bobbin. Fit the filter **but don't overtighten clip.**
- 5 **Fitting the cold air system**
Carefully expand the flexi hose to approx. 8"/20cm. Remove the three screws and lift out the front grille. Using a plastic tie attach the cold air hose to the hole in the small panel, **Drawing C.** The flexi hose should fit firmly against the grille when replaced. Using a plastic tie attach the hose to the hole on the rear side of the slam panel. The hose should finish 4"/10cm from the filter, no nearer.
- 6 **Tuning.**
CAT Cars. No adjustments are required.
An increase in fuel may be required if further engine modifications are to be carried out.
NON. CAT Cars.
We suggest that a simple **CO** test be carried out as some cars may be set weaker than the standard setting. The **CO** figure should not be more than **0.5%** above the recommended figure.
- 7 **Filter maintenance.**
Under normal conditions clean and reoil the filter at approx 40,000 miles 65,000 km.
Use only K&N cleaner and oil and follow the instructions carefully.

K&N filters are pre-oiled ready to fit.**The advantage's of K&N's cold air intake system**

Cooler air being denser will show positive improvements over systems that draw hot air from the engine bay.

This Kit Should Contain:-

- 1 x Air filter.
- 1 x Hose clip size 44.
- 1 x Bracket.
- 1 x Metal tube.
- 1 x Cold air hose assembly.
- 1 x Instruction sheet.
- 1 x Instruction pack:-
 - 1 x K&N Window Sticker.
 - 1 x Filter maintenance sheet.
 - 1 x Million mile warranty card.
 - 1 x Leaflet.
- 1 x Fixing kit containing :-
 - 1 x Rubber mounting.
 - 2 x Plastic cable ties (14" long).
 - 2 x $\frac{5}{16}$ " UNF nuts.
 - 2 x $\frac{5}{16}$ " spring washers.
 - 1 x M6 spring washer.
 - 1 x M6 Hex nut.

**IMPORTANT INSTRUCTIONS
FOR ROUND ENTRY
CLAMP ON AIR FILTERS**

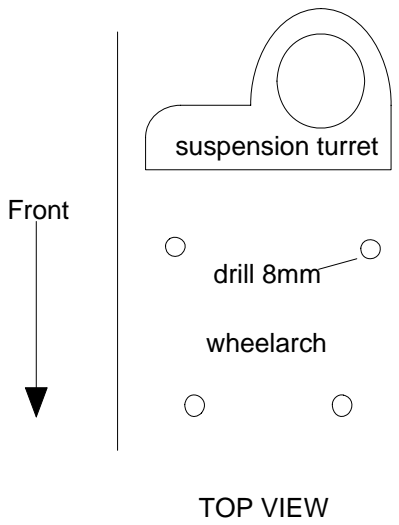
Gently tighten the hose clip to the point where the filter will just rotate on the pipe or intake flange. Reposition the K&N logo straight, then **give the clip two turns i.e. 360 , no more.**

FITTING YOUR OWN 57i KIT

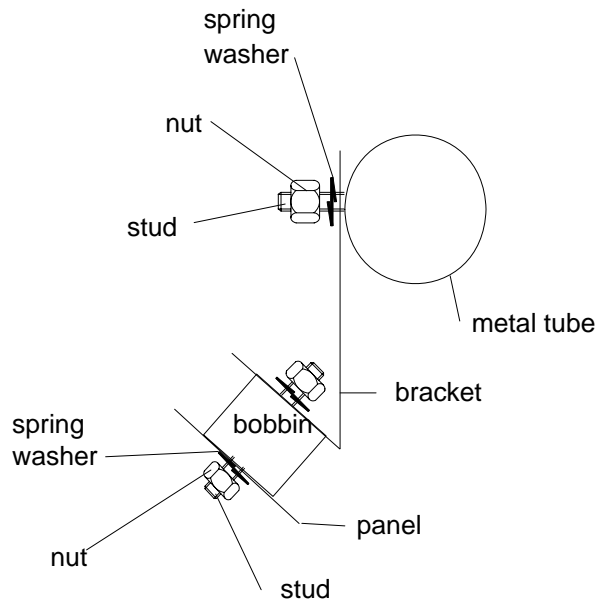
If not, **it is essential** that the person fitting the kit (e.g. mechanic) **carefully follows these particular instructions** even if he has fitted K&N kits before. This will save you both time and money. Kits incorrectly fitted may show a loss in performance e.g. the positioning of the essential cold air hose, (flexi expandable and rubber hoses are used).

A final check under the bonnet, by yourself, with the instructions, would seem sensible.

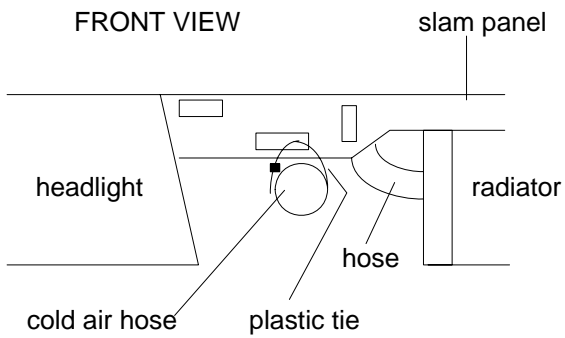
Drawing A



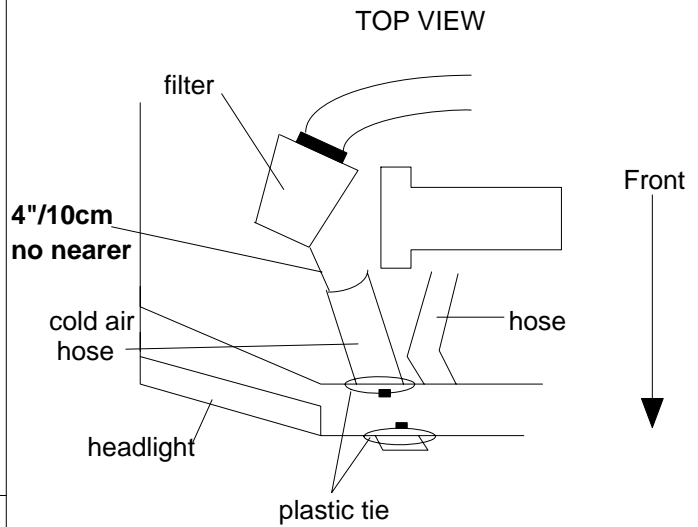
Drawing B



Drawing C



Drawing D



Drawing E

FRONT VIEW

